

- Maid room - 1	15.50	Sqm.
& Storage - 1	3.20	Sqm.
<b>Total</b>	<b>18.70</b>	<b>Sqm.</b>
- Maid room - 2	18.70	Sqm.
& Storage - 2	3.20	Sqm.
<b>Total</b>	<b>21.90</b>	<b>Sqm.</b>
- Eletric Room		
- Surge Tank		
- Pump room		
- Multi-purpose area		
- Walk-way		
<b>Total</b>	<b>81.50</b>	<b>Sqm.</b>

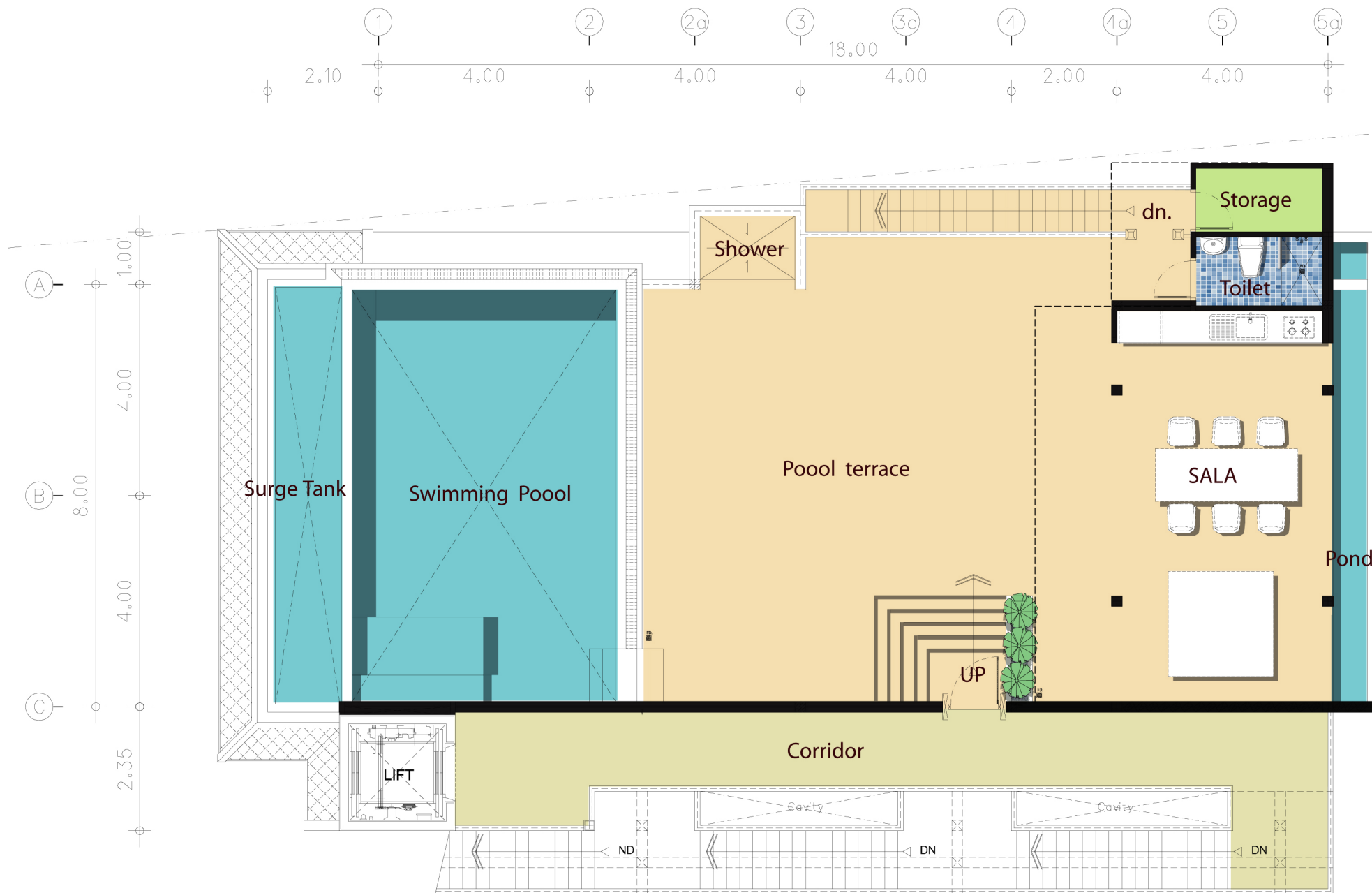
**STORE 2 [ LEVEL B ]**



Bed room - 1	43.90	Sqm.
Bed room - 2	32.10	Sqm.
Living area	50.50	Sqm.
Laundry & Toilet	11.45	Sqm.
Corridor	41.75	Sqm.
Stair	9.35	Sqm.
<b>Total</b>	<b>189.05</b>	<b>Sqm.</b>
Maid-2 & Sto.-2	21.90	Sqm.
Parking 1 car	16.00	Sqm.
<b>Total</b>	<b>226.95</b>	<b>Sqm.</b>

Sala / Pool & Toilet	182.95	Sqm.
2nd + 3rd		
<b>Total</b>	<b>409.99</b>	<b>Sqm.</b>

**2nd FLOOR PLAN**



Swimming Pool	60.35	Sqm.
Pool terrace	71.10	Sqm.
Sala cover	44.50	Sqm.
Toilet & Storage	7.00	Sqm.
<b>Total</b>	<b>182.95</b>	<b>Sqm.</b>

**3rd FLOOR PLAN**